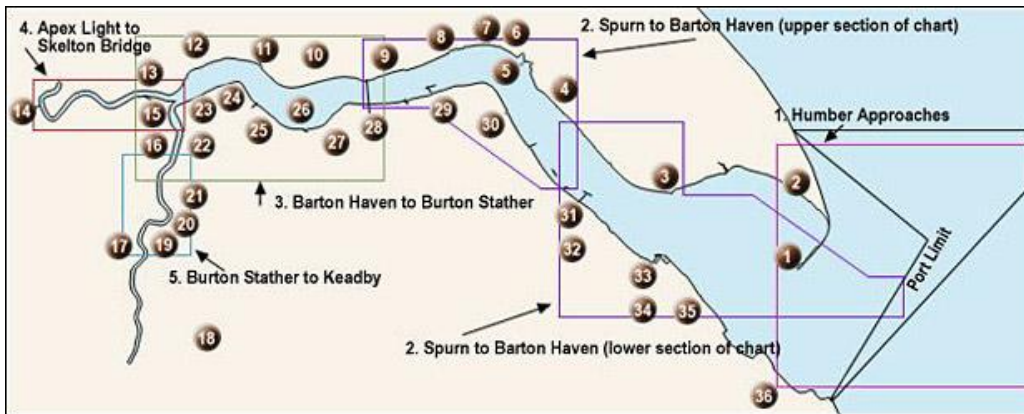


Chart Catalogue



Click on a chart area to see a sample of that chart and its approximate dimensions and scale. The charts shown above are those normally offered for sale and are all produced annually, with the exception of No.3, 'Barton Haven to Burton Stather', which is produced every two months due to the rapid channel changes which can occur in the Upper Humber. All of the above charts are available from any of the chart suppliers below.

B.Cooke & Son LTD
Kingston Observatory
58/59 Market Place
Hull

HU1 1RH
+44(O)1482 224412
<http://www.bcookeandson.co.uk>

Kildale Marine Ltd
Hull Marina
Railway Street
Hull, HU1 2DQ

+44(O)1482 227464
<http://www.kildalemarine.co.uk>

Chart Catalogue - Map Key

- [1. Humber Approaches](#) (434 kb).
- [2. Spurn to Barton Haven - lower](#) (724 kb).
- [2. Spurn to Barton Haven - upper](#) (724 kb).
- [3. Barton Haven to Burton Stather](#) (529 kb).
- [4. Apex Light to Skelton Bridge](#) (357 kb).
- [5. Burton Stather to Keadby](#) (416 kb).

Acrobat Reader 4 or higher is required to view the above files.

You can download it [here](#).

Please note that the above charts are samples only and are of a lower quality than those we sell. These charts are not current and SHOULD NOT BE USED FOR NAVIGATIONAL PURPOSES.

Charges for charts - 2009

No. 1 - Humber Approaches Humber Light Float to Spurn.	£11.00
No. 2 - Spurn to Barton Haven Produced Every Year.	£19.00
No. 3 - Barton Haven to Burton Stather Normally revised at the beginning of February, April, June, August, October and December.	£11.00
No. 4 - Apex Light to Skelton Bridge River Ouse.	£11.00

No. 5 - Burton Stather to Keadby River Trent.	£11.00
Copy of Humber, Ouse and Trent Tide Tables	£3.00
Issue of Notice to Mariners	£255.00
Byelaws	£3.00
Postage and packing - at cost	

A number of larger-scale charts of the main estuary are also produced, the scale generally being about four times larger than those listed above (1:10,000 or 1:12,500, rather than 1:25,000). These are also available for sale and further details can be obtained from the address below.

Cheques and postal orders should be made payable to "Associated British Ports" and sent to:

Associated British Ports
Humber Estuary Services,
PO Box 1 Port House,
Northern Gateway,
HULL,
HU9 5PQ

© Copyright Associated British Ports Holdings LTD 2009. All rights reserved